

Company Profile

January 2010

前人未踏の地へ・・・



Treading the Untrodden Path

日印ソフトウェア

Nichi-In Software Solutions Pvt. Ltd.

813, 100 Feet Ring Road, Banashankari III Stage, Hosakerehalli, Bangalore -560 085

TEL : +91 - 80 -26720882 / 3/4 FAX : + 91 - 80 - 26726861

E-mail : contact@nichi.com

TABLE OF CONTENTS

1. COMPANY INFORMATION	1
2. INTRODUCTION	2
3. INDUSTRY FOCUS	2
4. BUSINESS MODEL	2
5. SERVICES	2
6. TECHNOLOGIES	3
7. REGISTRATIONS	3
8. ORGANIZATION CHART	4
9. TURNOVER	4
10. INFRASTRUCTURE	5
11. JAPANESE LANGUAGE CAPABILITIES	5
12. QUALITY POLICY	5
13. STATUS REPORTING	5
14. EXPERIENCE LEVEL OF TECHNICAL TEAM.....	6
15. RECRUITMENT	6
16. PROJECT SPECIFIC TRAINING, RESEARCH.....	7
17. RISK MANAGEMENT STRATEGY	7
18. TRANSLATION WORK	7
19. SOME OF THE PROJECTS CARRIED OUT AT NICHI-IN.....	8
20. PRODUCT DEVELOPMENT.....	25

1. COMPANY INFORMATION

Company Name	:	Nichi-In Software Solutions Pvt. Ltd.
Company Address	:	# 813, 100 Feet Ring Road Banashankari III Stage Hosakerehalli Bangalore - 560 085 Tel: +91-80-26720882/3/4 Fax: +91-80-26726861 Email: contact@nichi.com URL : www.nichi.com
Established in year	:	1997
Joint Venture Company	:	NDR Co., Ltd. 2F, Sumitomo Seimei Minatomachi MT Building, 1-18-4, Minami -Horie, Nishi-Ku, Osaka, Japan 550-0015 URL: http://www.ndr.co.jp Tel: 81-6-6539-2111 Fax: 81-6-6539-3400
Representative	:	S.N.Giri, Managing Director
Authorised Capital	:	Rs. 50 Million
Paid up Capital	:	Approx. Rs. 29 Million
Total No. of Employees	:	76 Technical: 64 Bilingual Engineers 63 (including 32 in Japan) Non-Bilingual Engineers: 1 Japanese Language Teachers: 1 Marketing, Administration, Others: 11

2. INTRODUCTION

Nichi-In Software Solutions Private Limited is an Indo-Japanese joint venture with **N D R Co., LTD**, Osaka, Japan.

All of **Nichi-In** 's interaction with its Japanese clients is done in Japanese and the projects developed in Japanese are delivered.

Although many enterprises are now getting into business with Japanese, but many have not been able to effectively adapt themselves to the Japanese business customs.

However, in **Nichi-In**, training imparted to the engineers is not only in software but also in Japanese language, Japanese business culture, Lifestyle at Japan, instructed by native Japanese teachers and Indian nationals having abundant experience in Japan. The duration of this training is around 1 year. Once the training is completed and after the subsequent On the Job Training at **Nichi-In**, these engineers are transferred to Japan.

Nichi-In has been evaluated by its Japanese customers and hence has been able to execute a large number of Japanese projects in India.

Nichi-In has established its software development centre in Bangalore, the Silicon Valley of India. We are providers of offshore and onsite software development services and other IT enabled services.

3. INDUSTRY FOCUS

- Manufacturing
- Logistics
- Instrumentation and Control
- Factory Automation
- Office Automation

4. BUSINESS MODEL

- Offshore development service
- Onsite Consulting service (At Client site abroad)
- Offsite development service (At Japan office)

5. SERVICES

- Design and development of Internet/Intranet based software applications
- Web enabling of existing applications
- Client/server application software development using Object-Oriented methodologies
- Real-time systems such as data acquisition systems, device monitoring systems such as CNC machines and sensors, involving Serial/Socket communication
- Localization and Globalization of software applications from/to the Japanese language
- Software re-engineering
- Device Driver development
- Software Testing
- Technical translation (Japanese -> English, English -> Japanese)

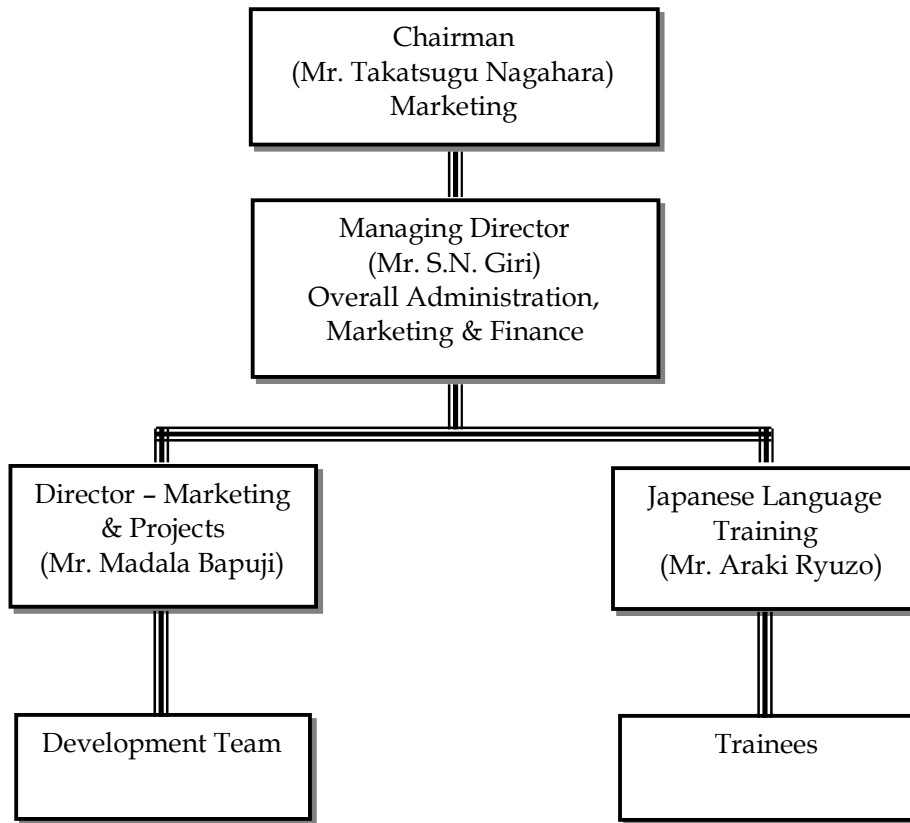
6. TECHNOLOGIES

OS	: Windows 98/NT/2000/XP, Windows CE, Linux
Languages	: C, C++, VB, VC++, C#, VB.NET, ASP.NET, Java, J2EE, JSP, EJB, Struts, Spring, VBScript, JavaScript, PHP
Database	: Oracle, MS-Access, MSDE, SQL Server, MAXDB, MySQL, PostGreSQL
Communication Server	: RS-232C, Socket Communication(Winsock)
Others	: IIS, Apache, Tomcat
	: ClickOnce SmartClient, MSMQ, HULFT-Message, SSL-VPN, JavaWebStart

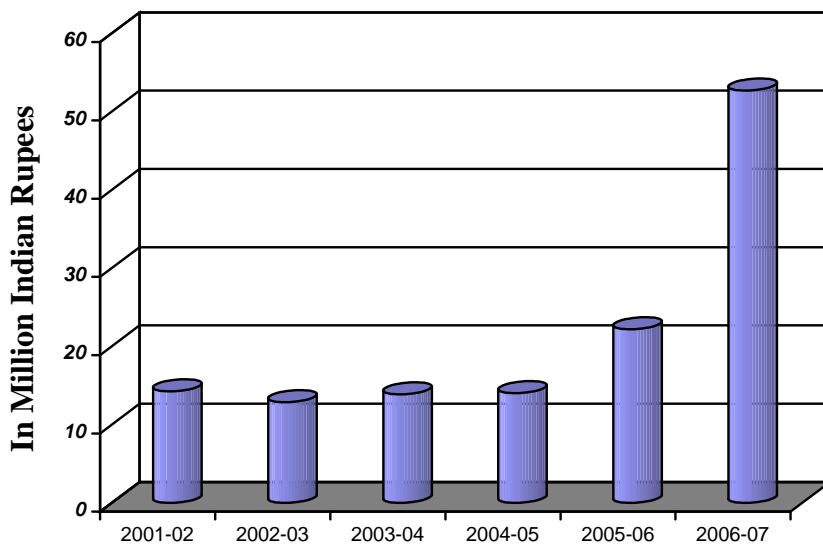
7. REGISTRATIONS

- A 100% EOU registered with STPI (Software Technology Parks of India), Dept. of Electronics, Govt. of India. Allowed to import computer Hardware and Software duty free for development and testing purpose s.
- A member of BCIC (Bangalore Chamber of Industry and Commerce)
- A member of ESC (Electronics and Computer Software Export Promotion Council)

8. ORGANIZATION CHART



9. TURNOVER



10. INFRASTRUCTURE

- Constructed space of approx. 3,000 sq. feet for development, with latest Computer with in a LAN
- Constructed Office space of approx. 7,400 sq. feet
- 24 hour adequate Power Supply with 2 hours backup through UPS.
- 24 hour Internet connectivity through ADSL (2Mbps) connection, with an ISDN backup facility.

11. JAPANESE LANGUAGE CAPABILITIES

To cater the needs of the Japanese market, we have the extremely experienced bilingual project managers who possess JLPT (Japanese Language Proficiency Test) level -1 and bilingual engineers, who possess JLPT Level-3 and Level-2

We also impart in-house Japanese language training for our engineers. The training imparted is very exhaustive and the engineers are trained in Japanese language (to read, write and speak), business culture, manners etc. The duration of the training is around 1 year. Along with the Japanese language training, the engineers would also be trained in languages like C, C++, VB, VC++, Java, .NET etc. After the training, some of them will be deputed to Japan for OJT.

12. QUALITY POLICY

- Spend sufficient time in specification study and prepare efficient design for the project and document the same. Here, we consider the possible changes in the requirements of the project in the future. We are flexible and are quite used to the changes / additions to the specifications at any point of time during the life cycle of the project .
- Conduct regular design reviews & source code reviews.
- Prepare Unit Test and Integration Test specifications by considering all the possible test cases; get the approval from the client and test according to them.
- Prepare simulation environment for testing if the situation demands.
- Follow the coding rules without fail.
- Make use of MSDN, Internet and other journals for problem solving.
- Maintain NIDN (Nichi-In's Developer Network), a knowledge database that contains all the problems, their solutions and innovative findings at Nichi-In in the previous projects for ready reference by anybody. Any new findings would be updated to this knowledge base with all details.
- Allocate dedicated person/(s) for a project team whose main work is to implement testing.
- Maintain proper communication with the client and document the same throughout the SDLC as a history, so that one can refer to them at any time.

13. STATUS REPORTING

The daily progress would be reported by the programmers to their immediate leaders in the form of Daily/Weekly reports. In the normal turnkey projects, the project manager /leader would be reporting the status to the client on weekly basis.

14. EXPERIENCE LEVEL OF TECHNICAL TEAM

- 1 to 2 Years experience for Software Engineer
- 2 years and above for Senior Software Engineer
- 4 years and above for Project Leader
- 6 years and above for Project Manager

15. RECRUITMENT

- Advertisement release in leading Newspapers/Magazines for the Engineers.
- Interaction with placement agencies to acquire best resumes.
- Implementation of Aptitude test and technical test in C, C++, VB/Oracle, VC++, Java.
- Detailed Technical Interview of the selected candidates.
- Detailed HR and Management Interview of the selected candidates.

16. PROJECT SPECIFIC TRAINING, RESEARCH

- Research and Study using MSDN, books and magazines.
- Research and study over Internet with proper documentation for future purposes.
- Sending selected engineers for project specific training courses at reputed training institutes.
- Developing prototypes as and when the engineers learn about new things.
- Study & understanding of source code of previous related projects.
- After initial study of the project, recognise the areas that require research work & training and plan for the research & training phase at an earlier stage itself.

17. RISK MANAGEMENT STRATEGY

20.1 HUMAN RESOURCE MANAGEMENT

- Good emoluments on par with Industry Standards.
- Good working environment.
- Good challenging projects.
- Invest on career building training, skill upgrade training.
- As Nichi-In has its own pool of Software Engineers, they can be considered for immediate replacement in case anybody quits the company during the of a project and provide replacement at the earliest. Proper technology transfer would be implemented.
- Quick and reliable access to S/W professionals through various resources.
- Always maintain a database of candidates with related skill set.

20.2 POWER

- UPS and Generator provide continuous power in case of power failure.

20.3 SECRECY

- Enforce NDA with the clients, vendors and the employees.
- 100% information secrecy is maintained by properly monitoring the people involved.
- Enforcing regular virus checks and make sure the development environment is virus protected.
- Regular project backups in MO Disks/Zip Disks/ CDs/Floppy Disks depending on the requirement.
- 24 Hours security provided at the company.

18. TRANSLATION WORK

Our key-members and other engineers trained in the Japanese language course will do translation of specifications, documents to be delivered and GUI of the developed software . If the workload is heavy and the given time is short the translation can be outsourced to external translators.

We also undertake technical translation work from Japanese→English and vice-versa, based on the availability of resources.

19. SOME OF THE PROJECTS CARRIED OUT AT NICHI -IN

A brief description about the projects carried out by us is presented below:

- **Stock Management System**

Aim: This system acquires the data based on a specified date and displays and prints this data on the screen.

Work Involved: The project involved Program Design, Coding and Testing of the software.

Volume: 5 man-months

OS: Windows 95

Language/Tools: Microsoft Visual Basic 4.0

RDB: BTRIEVE (Novell Netware)

H/W: PC

- **Data Transmission System**

Aim: This application is a transmission program between a master terminal and a remote terminal. This also involves real-time data monitoring and set up from the remote terminal based on the user.

Work Involved: The project involved Program Design, Coding and Testing of the software.

Volume: 2 man-months

OS: Windows 95

Language/Tools/DB: Microsoft Visual Basic 4.0

H/W: PC

- **MMI(My Machine Interface) Software**

Aim: This application is an NC card control of the ISA Bus inserted in the PC. This involved porting of the 16-bit version of Windows 3.1 to 32-bit version of Windows 95. Multilingual support.

Work Involved: The project involved Program Design, Coding, Testing and Integrated testing of the software.

Volume: 12 man-months

OS: Windows 95

Language/Tools/DB: Microsoft Visual Basic 4.0

H/W: PC

- **MMI And Data Input Software**

Aim: This application is a program, which enables input processing of different types of real-time data in a batch. It provides different user interface for inputting several types of data. This functionality enables block-wise input of data, validation of the data and also print functionality for the input data. This functionality also enables data to be read from the RDB and data-write to the RDB.

Work Involved: The project involved Program Design, Coding and Testing of the software.

Volume: 8 man-months

OS: Windows NT 4.0

Language/Tools: Microsoft Visual Basic 4.0

RDB : Oracle WorkGroup Server Ver. 7.2

H/W: PC

- **Data Transmission Tool**

Aim: This application is a small sized transmission system for a wide monitoring/control system. This involves transmission by the Control system and RS232C, reference/setup of the data in the system and parameter setting of the Control system.

Work Involved: The project involved Program Design, Coding and Testing of the software.

Volume: 3 man-months

OS: Windows NT 4.0

Language/Tools/DB: Microsoft Visual Basic 4.2

H/W: PC

- **Network-Set up system**

Aim: This application involves project management of the prototype systems development that uses CORBA (completed this work which was estimated to 42 -month in 3 man-months.). It also provides Process control of the system that offers des ktop free service and the Japanese interface.

- **Colour Mapping**

Aim: This application is a system that processes multiple images of 24 -bit colour and maps them to 256 colours. It provides system as OCX.

Work Involved: The project involved External Design, Internal Design, Program Design, Coding and Testing of the software.

Volume: 2 man-months

OS: Windows 95

Language/Tools/DB: Microsoft Visual C++ 5.0

H/W: PC

- **Training System**

Aim: This application involves creation of software for a sewage processing plant. It is provided in the form of OCX. The main functionalities are Trainee management, Course management and Record management.

Work Involved: The project involved External Design, Internal Design, Program Design, Coding and Testing of the software.

Volume: 5 man-months

OS: Windows NT 4.0, Windows 95

Language/Tools/DB: Microsoft Visual C++ 5.0, Microsoft Visual Basic 5.0

H/W: PC

- **Device Malfunction Information Management System**

Aim: This is an application that runs on Intranet/Internet and its main functionality is to collect and display the malfunction information on browser. The data is gathered from backend server that collects data from various sequencers. This application is made up of two parts viz., HIMAC Display system that displays malfunction information and HIMAC Monitoring System that collects the malfunction information from various sequencers.

Work Involved: The project involved Internal Design, Program Design, Coding, Testing and Integrated testing of the software.

Volume: 7 man-months

OS: Win NT Server (Server), Win 95/Win98/WinNT (Client)

Language/Tools/DB: VC++ 6.0, Java, HTML 4.0, JavaScript, Oracle 8i

Middleware: Internet Information Server 4.0

H/W: PC

- **Device Malfunction Information Management System Remodelling**

Aim: This is an application that runs on Intranet/Internet and its main functionality is to collect and display the malfunction information on the browser. The data is gathered from the backend server that collects the data from various sequencers. This application is made up of two parts viz., HIMAC Display system that displays the malfunction information and HIMAC Monitoring System that collects the malfunction information from various sequencers.

Work Involved: The project involved External Design, Internal Design, Program Design, Coding and testing of the software.

Volume: 4 man-months

OS: Win NT Server(Server), Win 95/Win98/WinNT(Client)

Language/Tools/DB: VC++ 6.0, Java, HTML 4.0, JavaScript, Oracle 8i

Middleware: Internet Information Server 4.0

H/W: PC

- **Electronic Board Parts Information Management System**

Aim: This is an application that runs on Intranet / Internet and main functionality is to assist in the production of the electronic boards by managing the data related to the parts used in the electronic boards. The data can be accessed and edited by the designers of the electronic Boards via internet / intranet.

Work Involved: The project involved Program Design, Coding and Testing of the software.

Volume: 3 man-months

OS: Redhat Linux 6.2J(Server), Windows NT / 98 / 95 (Client)

Language / Tools: Java, HTML 4.0, JavaScript, Apache Server

H/W: PC

Database: Oracle8i Standard Edition (R8.1.6)

- **Logistics Management System**

Aim: This is an ERP system, which automates the operations, related to management of food items for Universal Studio, Japan. This includes inventory management, placement of orders, deliveries etc. This is Client Server system over a WAN.

OS: Win NT Server, Win NT Workstation

Language/Tools/DB: VB, Oracle Server 7.3, True DB Grid Pro, Far Point Spread sheet, Crystal Reports, MS-Access

H/W: PC

- **Coach Information System (CIS)**

Aim: A real time data acquisition and monitoring system that would be installed inside a coach of a subway. The system involves touch panel based input. We have developed GUI and the data acquisition modules. This system is used for controlling and monitoring various activities like automatic transmission control, brake, speed, emergency signals, door status, AC, compressor etc.

Work Involved: The project involved Internal Design, Program Design, Coding, Testing and Integrated testing of the software.

Volume: 50 man-months.

OS: Windows NT 4.0 / CE 2.11

Language/Tools/DB: VC++ 6.0 Tool kit for Windows CE

Hardware: Hitachi SH3 based proprietary Hardware

- **Dental Check up System For Schools**

Aim: This is remodelling of the existing system. This supports four types of dental examinations and each output data is in CSV format.

Work Involved: The project involved External Design, Internal Design, Program Design, Coding, Testing and Production of the software.

Volume: 3 man-months

OS: Windows NT 4.0, Windows 95

Language/Tools/DB: Microsoft Visual C++ 5.0

H/W: PC

- **Distribution System**

Aim: This application involves the creation of Inventory reference, Shipment-received status reference, incoming-order status reference, master maintenance module. Also, this involves the creation of screens/reports.

Work Involved: The project involved Program Design, Coding and Testing of the software.

Volume: 30 man-months

OS: Client-Windows NT 4.0 Workstation (Service Pack 4.0) , Server-Windows NT 4.0 Server

Language/Tools/DB: Microsoft Visual Basic 5.0(Service Pack 3.0), PL/SQL, Oracle 7.3.4, MS-Access 97, TrueDBGrid Pro Ver 5.0, Spread Control, Crystal Reports Ver 4.6

H/W: PC

- **Porting of the Mirroring System**

Aim: This application involves the porting of software from UNIX to WINDOWS system. The software collects the pages from the web and edits them. Also, it involves the updation check of the remote document.

Work Involved: The project involved External Design, Internal Design, Program Design, Coding and Testing of the software.

Volume: 3 man-months

OS: Windows NT 4.0, Windows 95

Language/Tools/DB:C (VC++)

H/W: PC

- **Web Based Weekly Report System**

Aim: Automate the process of weekly report. The report must be available on the Web. The chief features to be implemented are

1. Entering Work Details (Planning, Implementation, Result, Time spent) by Engineers.
2. Viewing the work details of the employees and comment if any.
3. Report Generation of the employees work details over the week.

Details: The system works in the Client-Server architecture. The functionality of server and client is briefly described below.

Client: Client deals with the user interface, which involves the browser with the aid of the login screen from where User logs in. Here, the user is expected to enter Name and Password. Depending on the type of user (Engineer or Management) the appropriate screens get loaded.

Engineer: The Engineer can furnish details regarding the plan and work details. Also, the Report function is available to oversee his/her work. If he/she is a Team Leader, he/she can observe reports for his/her team members and can validate the reports.

Management: The Management can register and delete users, register and delete projects respectively along with other details such as project plans with respect to the various items. The Report function for the Management can observe and validate all the engineers.

Server: Server deals with the data storage, which involves the database wherein the data of every employee's work details, are stored.

Work Involved: The project involves Requirement specifications, analysis, designing, Coding, Testing and maintenance of the software.

OS: Windows-95

Language/Tools/DB: SQL-Server 7.0, ADO, ASP, Visual Interdev, FrontPage2000, and VB-Script

H/W: PC

- **Implementation of ERP Package**

Aim: The main objective is to customize and implement a commercially available ERP package at a 100% Japanese subsidiary unit. The modules covered were :

- Purchase
- Inventory
- Sales
- Finance & Excise

Work Involved: The role played was to

- Interact with the client
- Understand their requirements in detail
- Propose the solution to the client and get the confirmation
- Design and develop the solution as a customized module to the existing ERP package
- Test and implement the standard package and the customized modules
- Get the confirmation from the client
- Maintenance
- The project involved analysis, designing, Coding and Testing and maintenance of the software.

OS: Windows NT/95/98

Language/Tools/DB: Oracle, Developer 2000, SOFTIBS package

H/W: PC

- **Nichi-In Developers Network (NIDN)**

Aim: The main objective of development of Nichi-In Developer Network (NIDN) is to maintain useful information like problems and solutions faced during SDLC of projects, various articles in organized way. This application should be developed as an intranet application so that any legal user can utilize it from the client place. The application should be in a server so that user can use it from client place. The administrator will have the right to do addition, modification and other operation. The general user, other than administrator, can only navigate the available information. This will be developed as web based intranet application.

Work Involved: The project involved External Design, Internal Design, Program Design, Coding and Testing of the software.

Volume: 5 man-months

OS: Windows NT/95

Language/Tools/DB: VB-Script, HTML, ADO, IIS 4.0, ASP 4.0, SQL Server7.0, Visual InterDev, and FrontPage 2000

H/W: PC

- **Library (Asset) Management System**

Aim: The library management system automates the process of managing the library. All the assets of the library are stored in the database as a record. Through this application, the user can add, delete, or modify a record. The application also shows the details of the assets in the library, the daily transactions and checks the availability of a particular item such as Book, CD, Disks, or Magazine and reports it to the user.

Work Involved: The project involved External Design, Internal Design, Program Design, Coding and Testing of the software.

Volume: 6 man-months.

OS: Windows NT 4.0 Server (Server), Windows NT/98/95 (Client)

Language/Tools/DB: ASP, SQL Server7.0, ADO, Visual InterDev, FrontPage 2000, DHTML, VB-Script

- **WWWProject Management System**

Aim: This project can be managed on Internet or Intranet. The main transmission functionality of the Management side was project design, employee arrangement, progress status confirmation, request etc and of the Managed side was progress status report, progress status confirmation, individual schedule creation etc. Multi-step access setup (last-in-charge, Project manager, Team leader, Team-member). In order to make a web browser as a client, installation of exclusive application is not necessary at a client side, and version management of a system is easy. Also, the security functionality corresponding to the web.

Work Involved: The project involved External Design, Internal Design, Program Design, Coding and Testing of the software.

Volume: 5 man-months

OS: Windows NT 4.0 Server (Server), Windows NT/98/95 (Client)

Language/Tools/DB: ASP 2.0, HTML 4.0, VB Script

Middleware: Internet Information Server 4.0, Microsoft SQL Server 7.0

Tools: Microsoft Front Page 2000

- **Customisation of Mirroring Package**

Aim: The objective of the project was to customize the Mirroring Package, which involved downloading URLs from the Internet and then editing the links.

Work Involved: The project involved External Design, Internal Design, Program Design, Coding, Testing and Integrated testing of the software.

Volume: 8 man-months

OS: UNIX

Language/Tools/DB: C

H/W: HP-UNIX 10.2 workstation

- **CNC-PC Communication**

Aim: This system is developed for operating the CNC's with the PC. The system contains different API's, which are used for transmitting data to and from the CNC. This was developed as a DLL acting as a Client with the CNC being the Server. The concepts of Socket Communication and multithreading are exploited to achieve the results.

Work Involved: The project involved External Design, Internal Design, Program Design Coding, Testing and Integrated testing of the software.

Volume: 5 man-months

OS: Windows NT 4.0

Language/Tools/DB: Visual C++ 5.0

H/W: PC

- **Human Interface Library for Open CNC (HILO)**

Aim: Development of communication Library for exchanging data between PC and NC machine.

Work Involved: The project involved External Design, Internal Design, Program Design Coding, Testing and Integrated testing of the software.

Volume: 15 man-months

OS: OS2 Warp

Language/Tools/DB: Visual Age C++

H/W: PC, NC Machine, NC Interface Card

- **Data Server API**

Aim: This system is developed for serving the data at the PC to the CNC. The system contains different API's, which are used for continuously serving the data to the CNC. This was developed as a DLL acting as a Server with the CNC being the Client. The concepts of Socket Communication and multithreading are exploited to achieve the results.

Work Involved: Analysis, Design, Coding, Testing and debugging

OS: Windows NT 4.0

Language/Tools/DB: Visual C++ 6.0

H/W: PC

- **Moving Objects Tracking System (MOTS)**

Aim: This project decodes an mpeg file and the motion of all the objects in each frame is shown in the form of arrows. Length of the arrow indicates the magnitude and the angle depicts the direction of motion.

Work Involved: The project involved External Design, Internal Design, Program Design, Coding and Testing of the software.

Volume: 5 man-months

OS: Windows NT /95/98

Language/Tools/DB: VC++ 5.0

- **Land Evaluation System**

Aim: The Objective of the project was to evaluate the price of the Land according to the facilities and infrastructure of the area provided by the survey conducted through a GUI interface.

Work Involved: The project involved Internal Design, Program Design, Coding and Testing of the software.

Volume: 6 man-months

OS: Windows 95, Windows 98

Language/Tools/DB: VB 5.0

H/W: PC

- **DXF To MD Conversion Tool**

Aim: The objective of the project was to provide the GUI for converting the DXF drawing data to the corresponding MD data format. This conversion tool was developed as an OCX control.

Work Involved: The project involved External Design, Internal Design, Program Design, Coding and Testing.

Volume: 3 man-months

OS: Windows-95

Language/Tools/DB: Visual C++

H/W: PC

- **MIF To MD Conversion Tool**

Aim: The objective of the project was to provide the functionality for converting the MIF (MapInfo Interchange File) drawing data to the corresponding MD data format. Then, the tool was customized to handle a certain file/directory structure of a certain commercial map data product. This conversion tool was developed as an DLL.

Work Involved: The project involved External Design, Internal Design, Program Design, Coding and Testing of the software.

Volume: 2 man-months

OS: Windows-9x / NT / 2000

Language/Tools/DB: Visual C++

H/W: PC

- **PDF Generation Tool**

Aim: The objective of the project was to provide easy-to-use functionality for generating tables/slips in a PDF. Considering the web usage, the tool can generate PDF dynamically using external data of any kind. This conversion tool was developed as an DLL.

Work Involved: The project involved External Design, Internal Design, Program Design, Coding and Testing of the software.

Volume: 2 man-months

OS: Windows-9x / NT / 2000

Language/Tools/DB: Visual C++, PDFlib 4.0.1

H/W: PC

- **ODBC Project**

Aim: An ODBC driver was developed for specific file structure, which has two-way interface. It is based on Client - Server architecture. This driver is capable of getting the data from the browser using XML techniques.

Work Involved: The project involved External Design, Internal Design, Program Design, Coding and Testing of the software.

Volume: 8 man-months

OS: Windows NT server, Windows NT/95/98

Language/Tools/DB: Third party ODBC Driver, ODBC 3.5, VC++ 5.0, XML 1.0, MS-Excel, IE 5.0, HTML, 2.0, IIS 4.0

- **Production Management System and System Consulting**

Aim: This involved the system consulting for computerising the production management operations, analysing the requirement specifications, analysing the applicability of the commercial application. Also, it involved the introduction of the commercial application, maintenance etc.

OS: Windows NT 4.0 Server

Middleware: Pervasive SQL Server

Software: TPiCS 4

- **Dental Browser**

Aim: This system manages the patient's data (image of individual as well as the tooth). Also, searches for the patient's data and displays the thumbnail of the image data and manages the DMF data.

Work Involved: The project involved External Design, Internal Design, Program Design, Coding and Testing of the software.

Volume: 2 man-months

OS: Windows NT 4.0 WorkStation, Windows 98/95

Language/Tools/DB: Microsoft Visual C++ 5.0 (ActiveX Control) , Microsoft Visual Basic 5.0, VS-Flex Grid Control, Wang Image List Control

H/W: PC

- **OPC (OLE for process Control)**

Aim: The objective of the project was to study about OPC and draw interferences.

OS: Windows-95

Volume: 2 man-months

Language/Tools/DB: Netscape

H/W: PC

- **Speech Based Query System**

Aim: This is a web based application, where in queries are made in the form of speech. The queries are in turn passed to the server via Internet. And the answers are searched in the database. The appropriate answers are searched in the database. The appropriate answer is return to the client with output form of speech.

Work Involved: The project involved External Design, Internal Design, Program Design, Coding and Testing of the software.

Volume: 50 man-months.

OS: Win NT Server, Win 95

Language/Tools/DB: VC++, VB, VB Script, Java Script, IIS, MS-Agent

H/W: PC

- **Digital Ticket Kiosk**

Aim: This project involves issuing of tickets based on the requests from various mobiles. It receives the ticket issue requests and prints the tickets on a special printer. Various types of tickets such as one-way tickets, two way tickets, Volumeic passes etc. are handled.

Work Involved: The project involved Internal Design, Program Design, Coding and Testing of the software.

Volume: 6 man-months.

OS: Windows-98, Windows-95 and Windows NT 4.0

Language/Tools/DB: Visual Basic 5.0, Visual C++ 5.0, Video soft Control

H/W: PC

- **Development of Excel Add-In for SCADA data**

Aim: Development of MS-Excel Add-In to retrieve data from the database and display the same on Excel worksheet. Addition of seamless data display feature to the existing Excel features.

Work Involved: The project involved External Design, Internal Design, Program Design, Coding and Testing of the software.

Volume: 3 man-months.

Language: Microsoft Visual Basic for Applications

OS: Windows 2000, Windows NT 4.0, Windows 98/95

Tools: Microsoft Office 2000, Oracle 7.5.1

H/W: PC

- **Intranet WEB page development for Estimation of products**

Aim: Development of Intranet WEB pages for registration, deletion, requisition, confirmation, approval, discarding of estimates for test products. The screens and functionalities automatically vary based on the user privilege and estimation status.

Work Involved: The project involved External Design, Internal Design, Program Design, Coding and Testing of the software.

Volume: 2 man-months.

Language : Active Server Pages, Java Script, VB Script, HTML

OS: Windows 2000

Middleware: Internet Information Server 4.0, Informix

Tools: Informix Dynamic Server 2000 V9.21.TC1 -1 for Windows 2000

- **Speech Based Query System (Japanese Version)**

Aim: This is a web based application, where in queries are made in the form of speech. The queries are in turn passed to the server via Internet. And the answers are searched in the database. The appropriate answers are searched in the database. The appropriate answer is return to the client with output form of speech.

Work Involved: The project involved External Design, Internal Design, Program Design, Coding and Testing of the software.

Volume: 5 man-months

OS: Win NT Server, Win 95

Language/Tools/DB: VC++, VB, VB Script, Java Script, IIS, MS-Agent

H/W: PC

- **Fully Automatic Pulling Test System**

Aim: The main aim of this application is to enhance the functionality of the existing Fully automatic Pulling Test System. The tasks involved are adding new functionality, conversation of RS232C based communication to socket communication etc.

Work Involved: The project involved External Design, Internal Design, Program Design, Coding and Testing of the software.

Volume: 15 man-months

OS: Windows NT / 98 / 95

Language/Tools/DB: VB 5.0, Far Point Spreadsheet Control, iNetWinsock Control

H/W: PC

- **Proposal and Estimate Management System**

Aim: The main aim of this application is to manage the proposals and the estimates in their electronic form. The documents can be in the format of Excel, Word, scanned images etc. MSDE is the database used to maintain the data.

Work Involved: The project involved External Design, Internal Design, Program Design, Coding and Testing of the software.

Volume: 3 man-months

OS: Windows NT 4.0, Windows 2000

Language/Tools: ASP, VB / JavaScript, HTML

Middleware: Internet Information Server 4.0

Database: MSDE

H/W: PC

- **Customer Management System**

Aim: The main aim of this application is to create a system, which manages the Sales results of each distributor. It also manages database, which used a total of 150 PL/SQLs. It also involved the generation of each report.

Work Involved: The project involved External Design, Internal Design, Program Design, Coding and Testing of the software.

Volume: 15 man-months

OS: Windows NT 4.0 Workstation (Service Pack 4.0)(Client) , Server- Windows NT 4.0 Server

Language/Tools/DB: Microsoft Visual Basic 6.0 (Service Pack 3.0), PL/SQL, Oracle 8.1, Spread Control, Crystal Reports Ver 4.6

H/W: PC

- **Creation of the English version of GX-EXPLORER 2.0**

Aim: The main aim of this application is to create a system that has the Explorer functionality for the PLC. This involved analysing the existing system and translating it to English.

Volume: 3 man-months

OS: Windows NT/98/95/2000/XP/ME

Language/Tools/DB: VC++ 6.0, Far Point Spreadsheet Control, VSFlexGrid Control, WinTransPro

H/W: PC

- **Combination Support System**

Aim: The main aim of this application is to create a system, which manages combined processing of the goods of a food company. There were nearly 200 screens.

Work Involved: The project involved External Design, Internal Design, Program Design, Coding and Testing of the software.

Volume: 5 man-months

OS: Windows2000

Language/Tools/DB: VB.Net, TrueDBGrid for VB.Net, VSFlexGrid

H/W: PC

- **In-Out Management System**

Aim: The main aim of this application is to create a system, which manages the in-out goings of the employees. The existing application was ported to VB 6.0.

Work Involved: The project involved External Design, Internal Design, Program Design, Coding and Testing of the software.

Volume: 10 man-months

OS: Windows NT/98/95/2000

Language/Tools/DB: VB 6.0

H/W: PC

- **Root Sales System Development**

Aim: The main aim of this application is to develop a system, which works on a handy terminal. System operates on regular and management modes. This involved the creation of about 170 screens and tables.

Work Involved: The project involved Program Design, Coding and Testing of the software.

Volume: 15 man-months

OS: Windows CE 3.0, Windows 2000

Language/Tools/DB: Microsoft Embedded Tools 3.0 (VC++) , SDK for Handy terminal

H/W: PC

- **Equipment Control Board Inspection Application Development**

Aim: The main aim of this project is to develop an application to examine the equipment control board. A digital analog signal is output from the DO · DA board on the PCI slot to the target board via the jig board for the equipment control board inspection . The digital analog signal from the target board is read from the DI · AD board on the PCI slot by the jig board, and the equipment control board is tested. The equipment control board is tested based on serial communication with the target board. The print functionality and file output of the inspection data is possible.

Work Involved: The project involved Program Design, Coding and Testing of the software.

Volume: 2 month

OS: Windows XP

Language/Tools/DB: Microsoft Visual C++, Driver for DI/DO-AD/DA

H/W: PC

- **Installer Version Updation**

Aim: The main aim of this application is to update the existing installer project to the latest version and analysing and creation of the installer functionality that is differing.

Work Involved: The project involved Analysis, Development and Testing of the software.

Volume: 1 month

OS: Windows 98/2000/XP

Language/Tools/DB: InstallShield DevStudio 9.0, InstallShield Script

H/W: PC

- **Installer Version Updation 2**

Aim: The main aim of this application is to update the existing installer project to the latest version and analysing and creation of the merge module functionality.

Work Involved: The project involved Analysis, Development and Testing of the software.

Volume: 1 month

OS: Windows 98/2000/XP

Language/Tools/DB: InstallShield Professional 7.0, InstallShield Script

H/W: PC

- **PLC program development tool version updation**

Aim: The main aim of this application is to update the existing project, which was in VC++ 6 to the VC++ 7 version.

Work Involved: The project involved Analysis, Development and Testing of the software.

Volume: 2 man-months

OS: Windows 2000/XP

Language/Tools/DB: Microsoft Visual C++ 7.1

H/W: PC

- **Analysis of techniques for Localization of an existing application.**

Aim: The main aim of this application is to analyse the various techniques for Localization of an existing application and proposing various efficient Localization techniques using Resource Replacement, Satellite DLL, Localization Tool (RcWinTrans) etc.

Work Involved: The project involved Analysis, Prototype Development.

Volume: 3 man-months

OS: Windows 2000/XP

Language/Tools/DB: Microsoft Visual C++ 7.1

H/W: PC

- **Analysis of System Resource Usage.**

Aim: The main aim of this application is to analyse and validate the measuring methods for System Resource usage. Also it involves the analysis of the cause for shortage of system resource and proposal of the methods for reducing system resource usage for an existing large-scale application.

Work Involved: The project involved Analysis, Prototype Development.

Volume: 3 man-months

OS: Windows 98

H/W: PC

- **Instrumentation control device application version updation**

Aim: The main aim of this application is to update the existing project.

Work Involved: The project involved Analysis, Development and Testing of the software.

Volume: 5 man-months

OS: Windows 2000/XP

Language/Tools/DB: Microsoft Visual C++ 6.0

H/W: PC

- **Order system**

Aim: The main aim of this application is to develop a system required in a stock exchange for the transactions involved. Only a new order and the cancellation of order are handled.

Work Involved: The project involved External design, Internal design and detailed design.

Volume: 6 man-months

OS: UNIX

Language/Tools: C

Database: Oracle

H/W: PC

- **Catalog Ordering System.**

Aim: The main aim of this application is to develop a Web-Based system for ordering catalogs. It is divided into two parts: Ordering System and Order Processing System.

Work Involved: The project involved Development and Testing.

Volume: 6 man-months

OS: Windows 2000

Language/Tools/DB: Java, J2EE, Struts, JSP, and JavaScript

H/W: PC

- **Employee Management System**

Aim: The main aim of this application is to manage the employee data including details such as their salaries, joining date etc. This comprises of Employee Information Subsystem and Salary Information Subsystem. It generates various reports along with a print functionality.

Work Involved: The project involved Requirement Gathering, Design, Development and Testing.

Volume: 6 man-months

OS: Windows

Language/Tools/DB: VB, MaxDB

H/W: PC

- **Map Data Conversion Software**

Aim: The main aim of this application is to convert VMAP vector map data to image files viz., PNG files. The conversion is done by dividing the input vector data into units of different sizes. It is possible to set the font, line thickness, color, line type, polygon fill color etc., for each scale and layer of the input vector data.

Work Involved: The project involved Requirement Gathering, Design, Development and Testing.

Volume: 3 man-months

OS: Windows

Language/Tools/DB: VC++

H/W: PC

- **Marketing Team Management System**

Aim: The main aim of this application is to manage the day to day activities, progress and productivity of the marketing team of a company. It generates various reports and along with a print functionality.

Work Involved: The project involved Requirement Gathering, Design, Development and Testing.

Volume: 2 man-months

OS: Windows

Language/Tools/DB: VB, MaxDB

H/W: PC

- **Hishimuke Banking System(Open Systemization)**

Aim: The main aim of this application is to remodel the existing system to work under open system environment. The processing of the remittance data which is sent by other financial institutions or branches is carried out and the total amount of money at the time of bundling of each remittance data is output as a report.

Work Involved: The project involved Program Design, Development and Testing.

Volume: 6 man-months

OS: SuSE Linux 9.3

Language/Tools/DB: MaxDB

H/W: PC

- **Human Resource Management System**

Aim: The main aim of this application is to maintain and process the in time and out time of employees, the data of which is acquired from InOut Management System. Employee 's salary packages, performances, cost, deputation information and other master maintenance are carried out along with useful reports required for human resource management.

Work Involved: The project involved Program Design, Development and Testing.

Volume: 10 man-months

OS: Windows

Language/Tools/DB: MaxDB, SQLServer 7.0

H/W: PC

- **Print Logging System**

Aim: The main aim of this application is to extract the printable content that includes warnings etc., from an existing system and manage them in files. This application transmits the output from multiple clients to a central server using TCP/IP communication and handles the error processing when the server is in idle state.

Work Involved: The project involved Program Design, Development and Testing.

Volume: 2 man-months

OS: Windows

Language/Tools/DB: VC++, MTD(Mirapacid Text Driver V 4.4)

H/W: PC

- **USB 2.0 Driver Development**

Aim: The main aim is to design and develop USB2.0 class driver for an Automatic Testing Unit. The device driver handles keyboard, mouse, hard disk and printer.

Work Involved: The project involved Top level Design, Project Management and Interface with the Customer(Development was outsourced to a Partner Company)

Volume: 15 man-months

OS: VxWorks

Language/Tools/DB: C

H/W: PC

- **E-Commerce Website Development**

Aim: The main aim is to design and develop a E-Commerce website for a top watch maker of Japan which includes online payment options etc. In addition, their existing website was refined to include the latest features.

Work Involved: The project involved Top level Design, Project Management and Interface with the Customer(Development was outsourced to a Partner Company)

Volume: 10 man-months

OS: Windows

Language/Tools/DB: ASP.NET

H/W: PC

- **Performance Database Management System**

Aim: The main aim is to design and develop an application that can calculate and manage the performance/throughput of various employees of an organization. It includes various reports, CSV output feature etc., for manager class enabling them to monitor and improve the performance of their subordinates.

Work Involved: The project involved Program Design, Development and Testing.

Volume: 4 man-months

OS: Windows

Language/Tools/DB: Java, MaxDB, Microsoft SQL Server 7.0

H/W: PC

- **Moving Image Comparison Software**

Aim: The main aim of this application is to play two video files in the format of JPEG2000 simultaneously and enable the user to compare both of them.

Work Involved: The project involved Program Design, Development and Testing.

Volume: 1 month

OS: Windows

Language/Tools/DB: VC++(VS2005 Unmanaged Code)

H/W: PC

- **Creation of Electron Probe Micro Analyser**

Aim: The main aim of this application is to port the earlier version developed in Unix to Windows version and enhance the features such as providing graphical operational analysis using the spectrum and images acquired from the spectrum signals and managing the data acquired from the Micro Analyser.

Work Involved: The project involves Top Level Design, Program Design, Development and Testing.

Volume: -(In design stage) expected to be more than 100 man -months

OS: Windows XP(Vista)

Language/Tools/DB: C++/C#(VS2005)

H/W: PC

- **Localization of RA module**

Aim: The main aim of this application is to localize the Report Assistant(RA) module of the existing system to English version.

Work Involved: The project involves Top Level Design, Program Design, Development and Testing.

Volume: 3 man-months

OS: Windows XP

Language/Tools/DB: VC++

H/W: PC

- **Localization of Project Management Tool**

Aim: The main aim of this application is to localize the Windows and Linux versions of a project management tool AccelWork originally developed in Japanese into English using dynamic resource allocation method. GUI localization was done using CSS concept.

Work Involved: The project involves Top Level Design, Program Design, Development and Testing.

Volume: 15 man-months

OS: Linux-FedoraCore 3, Windows 2000, Windows XP

Language/Tools/DB: Php, Javascript, VBA and HTML

H/W: PC

- **BtoB Realtime Messaging System**

Aim: The main aim is to investigate a method to design and develop a BtoB realtime messaging system for the use of share brokers.

Work Involved: The project involves research of various tools and technologies and report preparation.

Volume: 3 man-months

OS: Linux, Windows

Language/Tools/DB: Java, .Net

H/W: PC

- **Arts Management System**

Aim: The main aim is to design and develop an ERP system for an organization wherein the business requests from the clients starting from its proposal, its purchase orders, sales etc., are processed and maintenance of such through timely reports, progress reports etc., are carried out. Data management, reports generation, data output to excel and printing comprised the major part of the system.

Work Involved: The project involved Program Design, Development and Testing of Master maintenance Module and generation, maintenance and printing reports of each sub-system.

Volume: 12 man-months

OS: Windows Server 2003(Server), Windows XP, Vista(Client)

Language/Tools/DB: C#.Net/NTT Terasoluna Framework/Oracle10g

H/W: PC

20. PRODUCT DEVELOPMENT

We, at Nichi-In have developed the following products for our end-users who have the copyright.

- **Daily Report Management System**

Aim: The main aim of this application is to input and manage the daily reports of the employees. The employee will input the work details and the duration he has worked for the day. Project wise, date wise search and report functionality is provided.

Work Involved: The project involved Internal Design, Program Design, Coding and Testing of the software.

Volume: 6 man-months

OS: Windows 2000, Windows NT 4.0, Windows 98

Language/Tools/DB::: Java, Java Script, HTML, MSDE, VB 6.0 for the Maintenance application

Middleware: Internet Information Server 4.0

H/W: PC

- **Daily Report Management System Remodelling**

Aim: The main aim of this application is to input and manage the daily reports of the employees. The employee will input the work details and the duration he has worked for the day. Project wise, date wise search and report functionality is provided. Another maintenance application developed in VB manages the database.

Work Involved: The project involved External Design, Internal Design, Program Design, Coding and Testing.

Volume: 2 man-months

OS: Windows 2000, Windows NT 4.0, Windows 98

Language/Tools/DB::: Java, Java Script, HTML, MSDE, VB 6.0 for the Maintenance application

Middleware: Internet Information Server 4.0

H/W: PC

- **Group Scheduling Add On**

Aim: The objective of the project was to customize Outlook 98 environment to provide facilities for group Scheduling of members, instead of, for individuals through MS - Exchange Server.

Work Involved: The project involved Requirement Analysis, External Design, Internal Design, Coding, Testing, Documentation and Production.

Volume: 20 man-months

OS: Windows NT, Windows 98, and Windows 95

Language/Tools/DB::: VB 5.0 and VC++ 5.0 / MS Exchange Server 5.5, Outlook 98

- **Dental Diagnosis System and Analysis**

Aim: The objective of the project was to provide dentists with a package to diagnose and analyse the patient's teeth Volumeically.

Work Involved: The project involved External Design, Internal Design, Program Design, coding, testing of the software.

Volume: 3 man-months

OS: Windows-95

Language/Tools/DB::: Visual C++

H/W: PC

- **Dental Diagnosis Yearly Data Display System**

Aim: The objective of the project is to provide a database with the yearly records of the dental diagnosis of a primary school student. It involved the creation of graphs and tables. The printing functionality to print data of 9 years and graphs is also provided.

Work Involved: The project involved External Design, Internal Design, Program Design, Coding and Testing of the software.

Volume: 3 man-months

OS: Windows NT 4.0, Windows 95

Language/Tools/DB::: Visual C++ 5.0

H/W: PC

- **Shupatt System**

Aim: The Objective of the project was to create a GUI interface for

The loom displaying the status of the loom i.e., the number of needles provided with threads and providing the loom machine with information about the needle into which the thread is to be inserted.

Work Involved: The project involved Internal Design, Program Design, Coding and Testing of the software.

Volume: 10 man-months

OS: Windows 95, Windows 98

Language/Tools/DB::: VB 5.0

H/W: PC

- **Dobby Pattern Creation System**

Aim: The Objective of the project was to create a GUI interface to Design / create/ compose patterns for a Loom .The patterns can be composed by using the existing pattern designs and all edit operations like copy, delete, insert, undo operations can be possible .The pattern files can be saved and read from the disk.

Work Involved: The project involved External Design, Internal Design, Program Design, Coding and Testing of the software.

Volume: 20 man-months

OS: Windows 95, Windows 98/NT/ 2000/XP/ME

Language/Tools/DB::: VC++ 5.0

H/W: PC

- **Conversation Response E-Commerce Website**

Aim: The Objective of the project is to create a web site to respond to natural conversation, based on speech recognition. The web page responds to the User's voice through voice and image (animation). The User's question is analysed in the web site, and the most suitable answer is selected. The transition between the web pages is based on the User's voice.

Work Involved: The project involved External Design, Internal Design, Program Design, Coding and Testing of the software.

Volume: 3 man-months

OS: Windows NT 4.0 Server (Server), Windows NT/98/95 (Client)

Language/Tools/DB::: ASP 2.0, HTML 4.0,VB Script, Microsoft Visual C++ 5.0 / Visual Basic 5.0 (ActiveX Control), SRE, TTS, NLE, MS-Agent, GraphVite 1.1, Microsoft Front Page 2000

Middleware: Internet Information Server 4.0, Microsoft SQL Server 7.0

H/W: PC

- **Porting of Speech Based Query System to Windows CE**

Aim: The Objective of the project was to port the client part of the Speech based query system to Windows CE. The natural language query based on speech recognition is possible even from PDA of Windows CE.

Work Involved: The project involved External Design, Internal Design, Program Design, Coding and Testing of the software.

Volume: 3 man-months

OS: Windows CE 3.0

Language/Tools/DB::: Microsoft Visual C++ 5.0, Microsoft Visual Basic 5.0, JavaScript, VB Script, ASP, Ms-Agent, MS-SQL Server 7.0, MS English Query, Entropic Speech Recognition Engine, MS Speech SDK, IIS, Elan TTS Engine, Internet Explorer 4.0, Netscape Communicator etc.

H/W: PC

- **Digital Illumination Measurement System**

Aim: The main aim is to manage the illumination unit's functionalities. Through which the connected sensors are detected using the serial communication.

Work Involved: The project involved Internal Design, Program Design, Coding, Testing, Integrated testing.

Volume: 10 man-months

OS: Windows 95/NT 4.0

Language/Tools/DB::: VC++ 5.0

Resource language: Japanese, English

H/W: PC